



# 辽原

## 辽原（集团）筑路机械有限公司

电话：0371-55901317

0371-55635088

传真：0371-55635099

邮箱：info@dayucn.biz

网址：<http://www.lyroad.cn> <http://www.asphalt-plant.cn>

销售办公室：河南省郑州市金水区东风路18号

生产基地：南阳市龙升工业园

邮编：450008

LIAOYUAN (GROUP) ROAD CONSTRUCTION MACHINERY CO., LTD.

Tel: +86-371-55901317

+86-371-55635088

Fax: +86-371-55635099

E-mail: info@dayucn.biz

Web: <http://www.lyroad.cn> <http://www.asphalt-plant.cn>

Marketing Office: No.18, Dongfeng Road, Zhengzhou, Henan, China.

Manufacturing: NanYang Loosen Industrial Zone

Zip Code: 450008



辽原（集团）筑路机械有限公司

LIAOYUAN (GROUP) ROAD CONSTRUCTION MACHINERY CO., LTD.



# 目录 CONTENTS

## 形象篇 IMAGE

公司简介 COMPANY PROFILE.....	01
公司历程 COMPANY COURSE.....	03
公司荣誉 COMPANY HONORS.....	05
组织架构 COMPANY ORGANIZATION.....	07
高层致辞 LEADER'S ADDRESS.....	08
企业文化 COMPANY CULTURE.....	09

## 实力篇 STRENGTH

良好的办公环境 CONVENIENT OFFICE.....	12
强大的生产能力 PRODUCTION CAPACITY.....	13
先进的技术研发 RESEARCH & DEVELOPMENT.....	15
严谨的质量管理 QUALITY CONTROL.....	16

## 产品篇 PRODUCTS

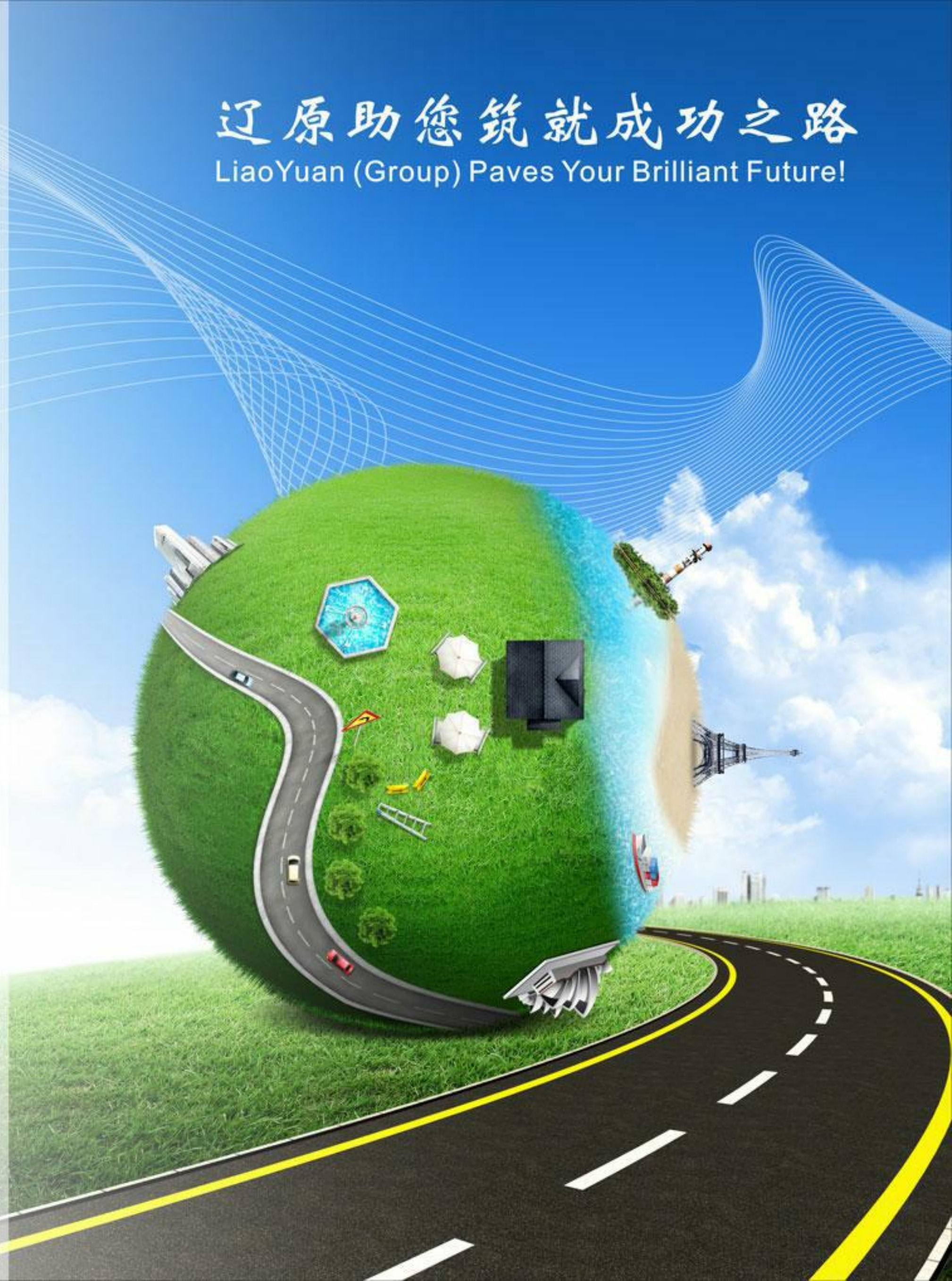
LB系列强制式沥青搅拌站 LB SERIES ASPHALT BATCH MIXING PLANT.....	17
DHB系列滚筒式沥青搅拌站 DHB SERIES ASPHALT DRUM MIXING PLANT.....	31
QLB系列移动式沥青搅拌站 QLB SERIES MOBILE ASPHALT MIXING PLANT.....	35
SLB系列移动式沥青搅拌站 SLB SERIES MOBILE ASPHALT MIXING PLANT.....	37
皮带传输式混凝土搅拌站 BELT CONVEYOR CONCRETE MIXING PLANT.....	39
斗提式混凝土搅拌站 HOPPER LIFT CONCRETE MIXING PLANT.....	43

## 服务篇 SERVICE

发货现场 SHIPMENTS.....	45
成功案例 CASES.....	49
国际交流 INTERNATIONAL COMMUNICATION.....	55
营销网络 MARKETING NETWORK.....	57
服务体系 SERVICE SYSTEM.....	60

辽原助您筑就成功之路

LiaoYuan (Group) Paves Your Brilliant Future!





## 公司简介 COMPANY PROFILE

辽原（集团）筑路机械有限公司是中国领先型的沥青混合料搅拌设备制造商，1992年成立于中国河南省，注册资金2千万人民币，工厂及办公面积65000平方米，包括郑州大予机械设备有限公司等子公司在内，整个集团公司共有员工820多人，其中包含技术人员219人，目前年产值达2.3亿人民币。

### 产品范围：

间歇式沥青混合料搅拌站，滚筒式沥青混合料搅拌站，移动式沥青混合料搅拌站，混凝土搅拌站，稳定土搅拌站等筑路设备。

### 质量控制：

辽原集团用具有高素质和高技能的人才，同时采用国际最先进的C.A.D，C.A.M和C.N.C等制作工艺。在2008年顺利通过了ISO9001 和 ISO14001质量管理体系认证，并在2010先后获得了打开欧洲市场的CE认证和俄罗斯市场的GOST认证。

### 营销市场：

1.国内市场：辽原集团生产的沥青混合料搅拌设备，已在河南，湖北，安徽，湖南，四川，陕西，山西，河北等近30个省、市、自治区的高速公路、高等级公路和城市道路建设中发挥了巨大的作用，为中国道路建设做出了重要的贡献。

2.国际市场：辽原集团于2006年开始开发海外市场，实行背靠祖国，面向国际的发展策略，并于2010年专门成立了子公司——郑州大予机械设备有限公司，致力开发国际市场，并迅速打开了国际市场，取得了骄人的成绩。目前，辽原集团已经在俄罗斯，澳大利亚，阿联酋，沙特阿拉伯，秘鲁，智利，阿尔及利亚，肯尼亚，南非，津巴布韦，菲律宾，印度尼西亚，哈萨克斯坦，蒙古，埃及等国销售并安装了超过30套的沥青混合料搅拌设备，国际市场前景非常美好。

辽原集团作为一家集科技研发、设计、生产、营销、技术支持、海陆运输和售后服务为一体，提供整体解决方案的企业，始终以客户和市场的需求为导向，建立了快速、灵活、高效的运营体系，在设备的安装、调试、维修、保养和用户培训等方面积累了丰富的国内外操作经验。

展望未来，一切源于专业和专注，辽原集团将一如既往的专注于沥青混合料搅拌设备的研发和创新，以创新精神提升品牌价值，以优质服务赢得行家赞誉，以领先技术帮助客户大幅度降低沥青的消耗，创造最佳的社会、经济和环境效益。

LiaoYuan (Group) Road Construction Machinery Co., Ltd. is one leading manufacturer in road construction machinery industry in China, and was established in September 1992, Headquarters is located at Henan Province, China. Covering above 65,000 square meters and registering capital of RMB 20 million. Including subsidiary company – Zhengzhou Dayu Machinery Co., Ltd., totally, LiaoYuan Group have 820 staff members, and including 219 technical personnel; currently, annual output value is about RMB 230 million.

### Product Scope:

Batch mix asphalt plant; drum mix asphalt plant; mobile asphalt plant; concrete mixing plant; stabilized soil mixing plant; and other road construction equipment.

### Quality Control:

Highly skilled and educated employees manufacture products in a modern facility, which incorporates C.A.D. (Computer Aided Design), C.A.M. (Computer Aided Manufacturing) and C.N.C. (Computer Numeric Controlled) manufacturing techniques. Quality management system follows ISO9001/ISO14001, and our products are with CE and GOST certificate.

### Sales Market:

I. Domestic Market: Henan, Hubei, Anhui, Hunan, Sichuan, Shaanxi, Shanxi, Hebei, Beijing, Tianjin, Jiangsu, Shandong, Zhejiang, Shanghai, Jiangxi, Guangdong, Guangxi, Xinjiang, Yunnan, Guizhou, Xinjiang, Ningxia, Gansu, Inner Mongolia, Liaoning, Jilin, Heilongjiang, Fujian etc.

II. International Marketing: Poland, Rumania, Russia, Australia, New Zealand, Canada, Panama, Ecuador, Peru, Chile, Algeria, Kenya, South Africa, Zimbabwe, Philippines, Indonesia, Kazakhstan, Mongolia, Egypt, etc.

LiaoYuan Group is committed to being the best in the business. From your initial enquiry, through the stages of order processing, manufacture, delivery and after sales service, all our staffs are determined to exceed your expectations. LiaoYuan Group recognizes that this is critical point to winning repeat business and building a long-term business relationship, which in turn is critical to our success.



## 公司历程 COMPANY COURSE

1992: 南阳市辽原筑路机械设备有限公司正式筹建。  
1993: 第一套筒拌式沥青搅拌设备 (DHB-20) 顺利下线, 交付客户。  
1994: 第一套筒拌式沥青搅拌设备 (DHB-40) 顺利下线, 交付客户。  
1995: 第一套筒拌式沥青搅拌设备 (DHB-60) 顺利下线, 交付客户。  
1996: 第一套强制式沥青搅拌设备 (LB800) 顺利完成运行测试, 投放市场。  
1997: 第一套强制式沥青搅拌设备 (LB1000) 顺利完成运行测试, 投放市场。  
1998: 第一套强制式沥青搅拌设备 (LB1500) 顺利完成运行测试, 投放市场。  
1999: 年销售收入突破2千万元。  
2000: LB2000型沥青搅拌站顺利完成运行测试, 第一套产品应用在京广高速公路的建设上。  
2001: 辽原被认定为高新技术企业。  
2002: 年销售收入突破5千万元。  
2003: 自主设计的LB3000型强制式沥青搅拌设备一次性通过交通部西安筑路机械测试中心的检测。  
2004: 正式升级为辽原(集团)筑路机械设备有限公司, 并顺利通过ISO9001质量管理体系认证。  
2005: LB3000型强制式沥青拌合设备首次应用在高速公路建设上。  
2006: 公司LB5000型沥青拌合设备顺利完成运行测试并投放市场。  
2007: 公司产品顺利出口阿尔及利亚, 公司国际化销售揭开了序幕。  
2008: 公司自主研发的LB3000型强制式沥青混合料搅拌设备在“第八届北京国际工程机械展览与技术交流会”中荣获一等奖。  
2009: “辽原”牌沥青混合料搅拌设备荣获“河南省名牌产品称号”。  
2010: 成立子公司——郑州大予机械设备有限公司, 专门开拓国际市场。  
2011: 公司研发中心被认定为省级企业技术中心。  
2012: 年销售收入突破2亿元, 出口设备超过20套, 成功地打开了国际市场的大门。

1992: Start to establish LiaoYuan Road Construction Machinery Co., Ltd.  
1993: Receive the first order, first set DHB-20 drum asphalt mixing plant deliver to customer.  
1994: The first set DHB-40 drum asphalt mixing plant deliver to customer.  
1995: The first set DHB-60 drum asphalt mixing plant deliver to customer.  
1996: The first set LB800 batch asphalt mixing plant finish commissioning test and come into the market.  
1997: The first set LB1000 batch asphalt mixing plant finish commissioning test and come into the market.  
1998: The first set LB1500 batch asphalt mixing plant finish commissioning test and come into the market.  
1999: Annual sales revenue achieve RMB 20 Million.  
2000: LB2000 batch asphalt mixing plant finish commissioning test, first time been used on JingGuang Highway construction.  
2001: LiaoYuan is authorized as high-tech enterprise.  
2002: Annual sales revenue achieve RMB 50 Million.  
2003: Company own designed LB3000 asphalt batch mixing plant passed the test of Xian Ministry of Communications Road Construction Machinery Testing Center.  
2004: Company promote to LiaoYuan (Group) Road Construction Machinery Co., Ltd. and pass ISO9001 Quality Management System Certification.  
2005: LB3000 batch asphalt mixing plant first used in the construction of highways.  
2006: LB5000 batch asphalt mixing plant passed commissioning test and come into the market.  
2007: Company product export to Algeria successfully, LiaoYuan started oversea sales.  
2008: Company own designed LB3000 batch asphalt batch mixing plant won first prize of the Eighth Beijing International Construction Machinery Exhibition & Seminar.  
2009: "LiaoYuan" Brand asphalt mixing plant won "Henan Top Brand".  
2010: In order to developing oversea marketing, establish subsidiary company—Zhengzhou Dayu Machinery Co., Ltd., who special for oversea marketing  
2011: The R&D center of LiaoYuan company is approved as Henan Enterprise Technology Center.  
2012: Annual sales revenue achieve RMB 200 Million, export over 20sets asphalt mixing plant.

# 【厚积薄发】

君子厚积而薄发—形容只有深厚的积累,  
充分地准备, 才能把事情做好, 才能取得成功。  
Accumulate richly and break forth vastly.



## 公司荣誉 COMPANY HONORS

在辽原人的共同努力下，我们的产品和服务在国内外获得了广泛的认可。

By the efforts of all LiaoYuan Staff, our products and services have been widely recognized at home and abroad.



## 【實至名归】

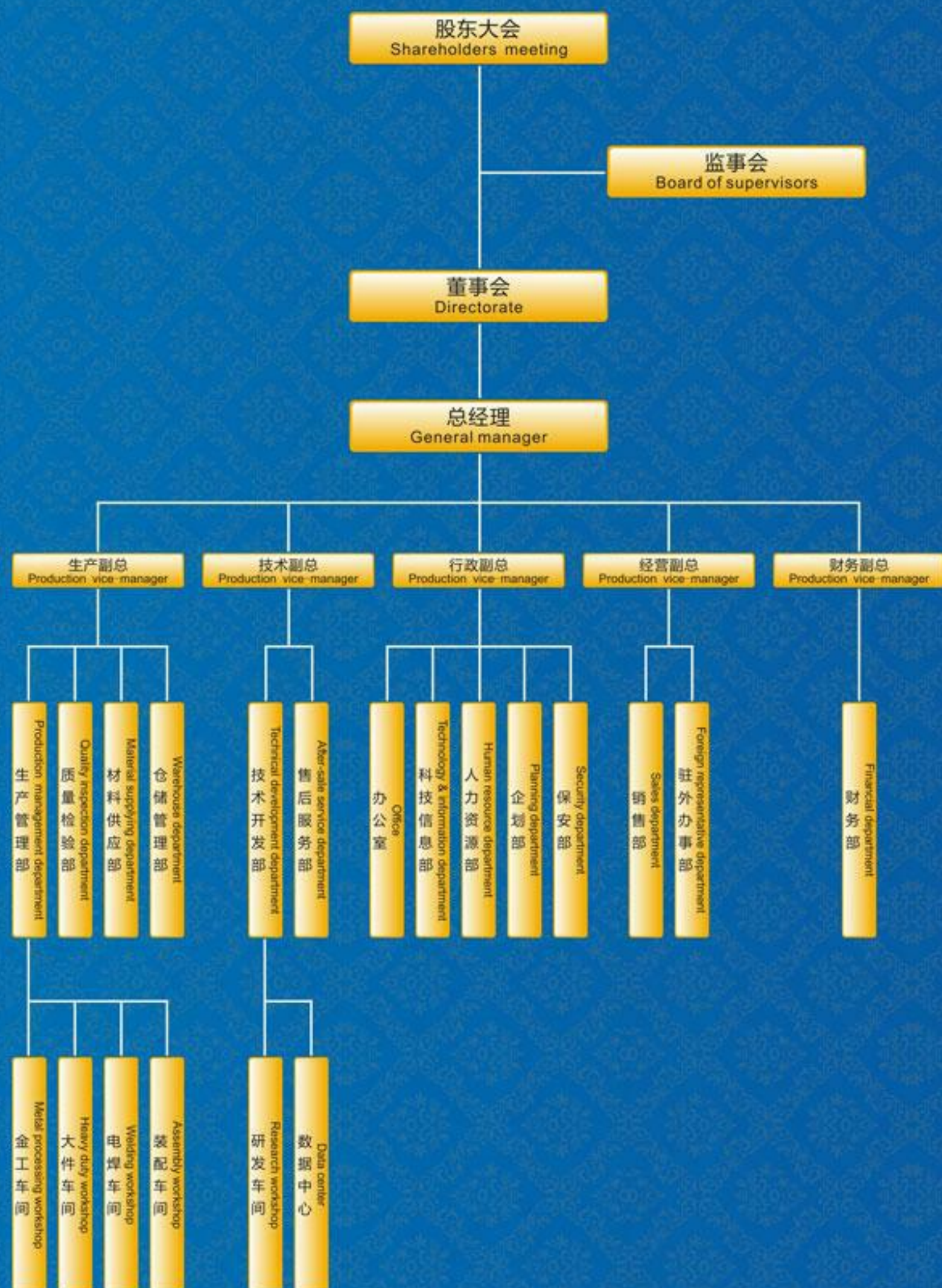
实至名归—有了真正的学识、本领或功业，自然就有声誉。

Honour is based on actual achievements.





# 组织架构 COMPANY ORGANIZATION



# 高层致辞 LEADER'S ADDRESS

二十余年来，辽原人植根中华沃土，立足中原大地，放眼全球，力践生态化路线、国际化战略、绿色化产业。

二十余年来，辽原秉承“以正为德、以善为争、以合为胜，服务社会”的经营理念，面对经济全球化和竞争国际化的进程，辽原人以无上的胆略迎接挑战，以百倍的激情点燃市场，以千倍的信心决胜五洲，以非凡的智慧运筹寰宇，坚韧图成，谋筑机大业。

以善为始道济天下，辽原人执着于“把专业做成经典”的创业理念，本着“售前一团火、售中孺子牛、售后心贴心”的服务精神，永恒地实践着“铸辽原品牌、让用户满意”的经营宗旨。

辽原的事业也是大众的事业，辽原人与客户和生和赢；与员工互利同生；与行业伙伴和合联手；与社会共惠同仁。辽原人遵循“和生惠利，微利是途”的原则，把企业做成开放性的“大企业、大学校、大家庭”，使员工、客户、企业、社区、社会的生态发展协同发展，是辽原人终生之使命。

天行健，君子以自强不息；地势坤，君子以厚德载物；天地之间，辽原人使命在肩，不敢有丝毫懈怠。天地之间，辽原人大智于思、大勇于行、大能于果、豪情万丈、活力四射、信心百倍，与时偕行的辽原人愿以永远的真诚与海内外各界朋友挽手连心、共铸辽原大未来。

In twenty years, LiaoYuan people were rooted in the fertile soil of China, based on the Central Plains, expand the horizons to the whole world, firmly put ecological routines, international strategy and green industry into practice.

In twenty years, LiaoYuan adheres to the "take honest as virtue, take kindness as competition, take combination as success, service society" business philosophy, in the face of economic globalization and international competition progress, LiaoYuan people meet the challenges with supreme courage, light the market with hundredfold passion, gain a decisive victory with thousand-fold belief, plan & manage with outstanding wisdom, tough and tensile, contrive LiaoYuan a great future.

Begin with kindness, put a way to the world, LiaoYuan people hold on to "make professional into classic" business philosophy, based on the service spirit of "enthusiasm before sales, servant in sale and faithfulness after sale", eternally carry out "establish LiaoYuan brand, pursue the customer satisfaction" business purpose.

LiaoYuan cause is the cause of the public. LiaoYuan realizes win-win result with her customers, makes harmonious relation with employees, coordinates with competitors and makes benefits to the society. Under the principle of "harmony makes benefits, meager profit is the business operating way", LiaoYuan tries to become a "big company, big school, big family", makes harmonious development of employees, customers, company, community and society, which is the LiaoYuan's lifelong mission.

"The movement of heaven is full of power. Thus the superior man makes himself strong and untiring." LiaoYuan keeps her mission in heart and dares not have the slightest negligence. With wide wisdom, great courage, good execution, high enthusiasm and full confidence, LiaoYuan is willing to hold hands with worldwide friends with honesty to make glorious future.



## 公司文化 COMPANY CULTURE

核心竞争力、人才、技术、管理决定一切

EVERYTHING IS DECIDED BY THE CORE COMPETITIVE POWER, HUMAN RESOURCE, TECHNOLOGY AND MANAGEMENT.

企业文化是企业发展的源动力。辽原文化根植传统，面向未来。辽原人始终坚持中外互补的学习原则，在继承民族传统文化的同时，放眼世界，放眼未来，以创新的眼光打造和建设自己的企业文化，坚持：以善为始，造福员工，造福客户，造福社会，一步一个脚印，将道济天下的伟大使命落实在企业的发展中。

Enterprise culture is the driving force to develop. On the basis of traditional culture, LiaoYuan company gears the needs of the world. Inheriting the traditional culture and firmly holding the Sino-foreign complementary principle, LiaoYuan people open eyes on the world and the future to build an unique enterprise culture. We firmly practice the goodness first, and benefit the employees and customers as well as society feedback. Thus we work steadily to practice sharing society responsibility during the enterprise development.

**【辽原宗旨】** 诚信为本，质量为上。

LiaoYuan service tenet: Honesty first, quality foremost.

**【辽原精神】** 诚信精细，高效务实。

LiaoYuan spirit: Honest, delicate, high efficient and pragmatic.

**【经营理念】** 思路决定出路，诚信铸就财富。

Management principle: The development way depends on the concept and the wealth comes out of good faith.

**【经营信条】** 铸辽原品牌，让用户满意。

Management belief: Establish of LiaoYuan brand for satisfaction of users.

**【辽原价值观】** 互惠共生。

LiaoYuan values: Reciprocal.

**【辽原人才观】** 尊重人才，任人唯贤。

Human resource viewpoint: Respect of person with ability and appoint people by abilities.

**【服务理念】** 把专业做成经典。

Service principle: Make professional into classic.

**【服务精神】** 一团火，孺子牛，心贴心。

Service spirit: Enthusiasm, servant and faithfulness.

**【辽原目标】** 打造中国筑路机械第一品牌。

LiaoYuan target: To establish No.1 brand of China road construction machinery.

# 【齐心协力】

齐心协力—形容认识一致，共同努力。

Pulls together, comes together, works together.

我们的团队!



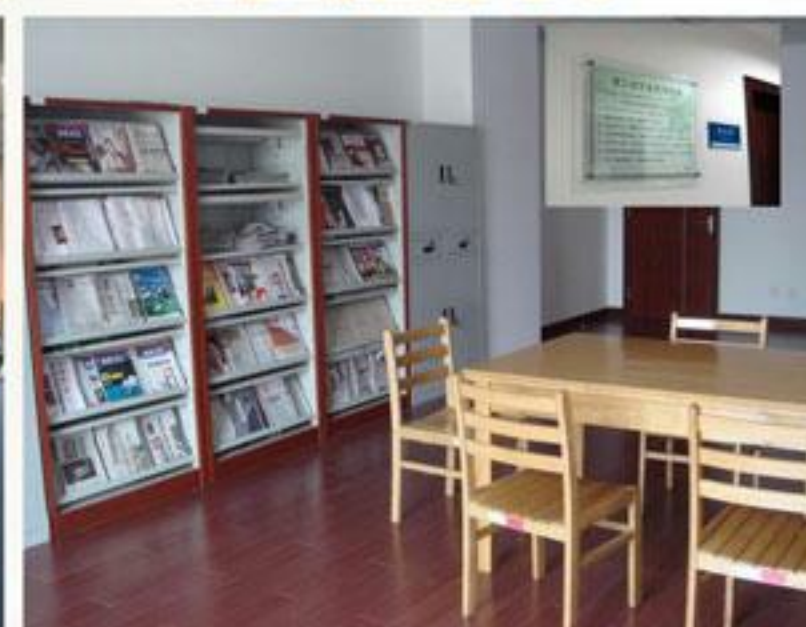
# 【品质源自 實力 專業 成就完美】

Quality comes from power, professional makes perfect.

## 良好的办公环境 CONVENIENT OFFICE

良好的工作环境可以有效提升工作效率，激发灵感。从而为客户提供更好的产品和服务。

Good working environment can effectively improve work efficiency. So, we can provide customers with better products and services.





## 强大的生产能力 PRODUCTION CAPACITY

辽原筑机占地65000 平方米，拥有重型工业厂房四座，各种大中型金加工，铆焊，装配设备300 余台，装配最大起吊能力 300 吨，年产沥青混合料搅拌设备 200 余套，是目前国内筑路机械主要的生产和出口基地。

LiaoYuan Group covers an area of 65,000 square meters which includes four heavy duty industrial workshops. Our equipment includes more than 300 sets of large and medium sized metal processing, riveting and installing machines, the maximum lifting capacity is 300 tons. We produce more than 200 sets asphalt mixing plants and concrete mixing plants annually. Our company has become a major road construction machinery manufacture and export base in China.





## 先进的技术研发 RESEARCH & DEVELOPMENT

辽原筑机视科技为第一生产力，拥有一个省级企业技术中心，研发人员 60 余人，其中博士 5 人，硕士 18 人，拥有 20 余项国家级专利技术，并且与科技部及各大院校建立了良好的合作关系，保证了我们的产品在同行中步步领先，永立潮头。

Science and technology constitute the primary productive force. With one provincial level enterprise technology center and more than 60 of employees for research & development, 5 with doctor degrees, 18 with master's degrees and with more than 20 of state patents, LiaoYuan has established favorable cooperation relationship with department of science and technology as well as key universities and colleges, which guarantees the leading position in road construction machinery manufacturing industry.



## 严谨的质量管理 QUALITY CONTROL

市场如水，企业如舟，质量像舵，人是舵手。一个企业要想在市场竞争中乘风破浪，必须首先要有一个好舵，还要一个好的舵手进行操控，保证企业之舟能够行驶的又快又稳。在现代社会中，质量已经成为企业核心竞争力的最基本要素，在企业的发展过程中起着决定性的作用。

Markets such as water, companies such as boat, like the quality of the rudder, the person is helmsman. An enterprise in order to forge ahead in the competitive market, we must first have a good rudder, but also a good helmsman to manipulate, to ensure that enterprises of the boat can travel fast and stable. In modern society, the quality has become the core competitiveness of the most basic elements in the development of enterprises play a decisive role in the process.









# 强制式沥青搅拌站

## ASPHALT BATCH MIXING PLANT

LB 系列间歇强制式沥青混合料搅拌站主要包含：冷骨料供给系统、干燥滚筒、燃烧系统、热骨料提升系统、筛分系统、称量系统、搅拌系统、除尘系统、粉料供给系统、沥青供给系统、电气控制系统、成品料仓等。

除尘系统：① 一级重力除尘+二级布袋除尘；② 一级重力除尘+二级水除尘。

燃烧系统：① 燃油型；② 燃气型；③ 燃煤型；④ 燃油、燃气两用型。

成品料仓：① 底置式成品料仓；② 旁置式成品料仓。

LB series asphalt batch mixing plant mainly including: cold aggregate supply system, drum dryer, burning system, hot aggregate elevator, vibrating screen, weighing system, mixing tower, dust collecting system, filler supply system, bitumen supply system, electrical control system, finished asphalt storage bin.

### Dust Collecting System:

I. First grade gravitational dust collector + Second baghouse dust collector;

II. First grade gravitational dust collector + Second water dust collector.

### Burning System:

I. Oil burning system; II. Gas burning system; III. Coal burning system; IV. Oil & Gas dual purpose Burning System.

### Finished Asphalt Storage Bin:

I. Integrated asphalt storage bin; II. Separated asphalt storage bin.

## 产品特点 Features

- 采用模块化结构，安装简单方便；  
Composed of modular structure, easy and convenient for installation;
- 高效节能的骨料加热系统；  
Highly efficient energy saving aggregate heating system;
- 采用精确的测量技术；  
Adopted accurate measurement technology;
- 创新的高效搅拌技术；  
Innovative highly efficient mixing technology;
- 工效学自动控制系统；  
Ergonomic automatic control system;
- 排放物完全符合环保要求；  
Emission meets environment protection requirements;
- 稳定可靠，易于保养；  
Stable and reliable, easy for maintenance;



- |   |  |  |
|---|--|--|
| 1 冷骨料供给系统<br>Cold aggregate supply system | 6 二级除尘系统<br>Baghouse dust collector    | 11 成品仓<br>Asphalt storage              |
| 2 干燥滚筒<br>Drum dryer                      | 7 热骨料提升系统<br>Hot aggregate elevator    | 12 沥青供给系统<br>Bitumen supply system     |
| 3 燃煤燃烧器<br>Coal burner                    | 8 震动筛分系统<br>Vibrating screen           | 13 电气控制系统<br>Electrical control system |
| 4 煤粉供给系统<br>Coal feeder                   | 9 粉料供给系统<br>Filler supply system       |  |
| 5 一级除尘系统<br>Cyclone dust collector        | 10 称量和搅拌系统<br>Weighing & mixing system |  |





# 主要参数 Main Parameter

型号 Model	额定产量 Capacity (standard conditions)	搅拌能力 Mixer Capacity	燃料消耗 Consumption(Standard conditions)		称量精度 Measurement Accuracy
			燃油 Fuel Oil	燃煤 Fuel Coal	
LB500	40 t/h	500 kg	5.5-7 kg/t	10 kg/t	骨料: ±0.5% Aggregate: ±0.5% 粉料: ±0.5% Powder: ±0.5% 沥青: ±0.25% Asphalt: ±0.25%
LB800	64 t/h	800 kg	5.5-7 kg/t	10 kg/t	
LB1000	80 t/h	1000 kg	5.5-7 kg/t	10 kg/t	
LB1200	100 t/h	1200 kg	5.5-7 kg/t	10 kg/t	
LB1500	120 t/h	1500 kg	5.5-7 kg/t	10 kg/t	
LB2000	160 t/h	2000 kg	5.5-7 kg/t	10 kg/t	
LB2500	200 t/h	2500 kg	5.5-7 kg/t	10 kg/t	
LB3000	240 t/h	3000 kg	5.5-7 kg/t	10 kg/t	

# 重要部件 Main Components



冷骨料供给系统  
Cold aggregate supply system



皮带传输系统  
Belt conveyor system



干燥滚筒  
Drum dryer



燃油燃烧器  
Oil burner



粉料仓和粉料提升机  
Filler silo & Filler elevator



热骨料提升机和拌合楼  
Hot aggregate elevator & Mixing tower



一级除尘系统  
First grade dust collector



二级除尘系统  
Second grade dust collector



沥青供给系统  
Bitumen supply system



电气控制系统  
Electrical control system



# LB500 强制式沥青搅拌站

LB500 ASPHALT BATCH MIXING PLANT

型号 / Model	LB500
产量 / Capacity	40 t/h (额定工况 / Standard Working Condition)
搅拌机 / Mixer Capacity	500 kg/批
干燥滚筒 / Drum Dryer	Φ1200*5200mm
燃料消耗 / Fuel Consumption	柴油 / Diesel: 5.5-7kg/t; 煤 / Coal: 10kg/t
废气排放 / Air Emissions	≤100mg/Nm³ (水除尘 / Water dust collector)
工作噪音 / Working Noise	≤70db(A)
装机功率 / Installation Power	177kW
额定电压 / Voltage	220V/380V-50Hz (可调整的 / Adjustable)
占地面积 / Plant Covering Area	长 / Length: 25m; 宽 / Width: 20m; 高 / Height: 12m



# LB800 强制式沥青搅拌站

LB800 ASPHALT BATCH MIXING PLANT



型号 / Model	LB800
产量 / Capacity	64 t/h (额定工况 / Standard Working Condition)
搅拌机 / Mixer Capacity	800 kg/批
干燥滚筒 / Drum Dryer	Φ1200*6300mm
燃料消耗 / Fuel Consumption	柴油 / Diesel: 5.5-7kg/t; 煤 / Coal: 10kg/t
废气排放 / Air Emissions	≤20mg/Nm³ (布袋除尘 / Baghouse dust collector)
工作噪音 / Working Noise	≤70db(A)
装机功率 / Installation Power	230kW
额定电压 / Voltage	220V/380V-50Hz (可调整的 / Adjustable)
占地面积 / Plant Covering Area	长 / Length: 25m; 宽 / Width: 20m; 高 / Height: 14m



# LB1000 强制式沥青搅拌站

## LB1000 ASPHALT BATCH MIXING PLANT

型号 / Model	LB1000
产量 / Capacity	80 t/h (额定工况 / Standard Working Condition)
搅拌机 / Mixer Capacity	1000 kg/批
干燥滚筒 / Drum Dryer	Φ1600*6800mm
燃料消耗 / Fuel Consumption	柴油 / Diesel: 5.5-7kg/t; 煤 / Coal: 10kg/t
废气排放 / Air Emissions	≤20mg/Nm³ (布袋除尘 / Baghouse dust collector)
工作噪音 / Working Noise	≤70db(A)
装机功率 / Installation Power	303kW
额定电压 / Voltage	220V/380V-50Hz (可调整的 / Adjustable)
占地面积 / Plant Covering Area	长 / Length: 30m; 宽 / Width: 28m; 高 / Height: 17m



# LB1200 强制式沥青搅拌站

## LB1200 ASPHALT BATCH MIXING PLANT



型号 / Model	LB1200
产量 / Capacity	100 t/h (额定工况 / Standard Working Condition)
搅拌机 / Mixer Capacity	1200 kg/批
干燥滚筒 / Drum Dryer	Φ1800*8000mm
燃料消耗 / Fuel Consumption	柴油 / Diesel: 5.5-7kg/t; 煤 / Coal: 10kg/t
废气排放 / Air Emissions	≤20mg/Nm³ (布袋除尘 / Baghouse dust collector)
工作噪音 / Working Noise	≤70db(A)
装机功率 / Installation Power	349kW
额定电压 / Voltage	220V/380V-50Hz (可调整的 / Adjustable)
占地面积 / Plant Covering Area	长 / Length: 40m; 宽 / Width: 30m; 高 / Height: 17m



# LB1500 强制式沥青搅拌站

## LB1500 ASPHALT BATCH MIXING PLANT

型号 / Model	LB1500
产量 / Capacity	120 t/h (额定工况 / Standard Working Condition)
搅拌机 / Mixer Capacity	1500 kg/批
干燥滚筒 / Drum Dryer	Φ1800*8000mm
燃料消耗 / Fuel Consumption	柴油 / Diesel: 5.5-7kg/t; 煤 / Coal: 10kg/t
废气排放 / Air Emissions	≤20mg/Nm³ (布袋除尘 / Baghouse dust collector)
工作噪音 / Working Noise	≤70db(A)
装机功率 / Installation Power	369kW
额定电压 / Voltage	220V/380V-50Hz (可调整的 / Adjustable)
占地面积 / Plant Covering Area	长 / Length: 40m; 宽 / Width: 30m; 高 / Height: 17m



# LB2000 强制式沥青搅拌站

## LB2000 ASPHALT BATCH MIXING PLANT



型号 / Model	LB2000
产量 / Capacity	160 t/h (额定工况 / Standard Working Condition)
搅拌机 / Mixer Capacity	2000 kg/批
干燥滚筒 / Drum Dryer	Φ2200*8500mm
燃料消耗 / Fuel Consumption	柴油 / Diesel: 5.5-7kg/t; 煤 / Coal: 10kg/t
废气排放 / Air Emissions	≤20mg/Nm³ (布袋除尘 / Baghouse dust collector)
工作噪音 / Working Noise	≤70db(A)
装机功率 / Installation Power	455kW
额定电压 / Voltage	220V/380V-50Hz (可调整的 / Adjustable)
占地面积 / Plant Covering Area	长 / Length: 45m; 宽 / Width: 32m; 高 / Height: 17m



# LB2500 强制式沥青搅拌站

## LB2500 ASPHALT BATCH MIXING PLANT

型号 / Model	LB2500
产量 / Capacity	200 t/h (额定工况 / Standard Working Condition)
搅拌机 / Mixer Capacity	2500 kg/批
干燥滚筒 / Drum Dryer	Φ2500*9000mm
燃料消耗 / Fuel Consumption	柴油 / Diesel: 5.5-7kg/t; 煤 / Coal: 10kg/t
废气排放 / Air Emissions	≤20mg/Nm³ (布袋除尘 / Baghouse dust collector)
工作噪音 / Working Noise	≤70db(A)
装机功率 / Installation Power	520kW
额定电压 / Voltage	220V/380V-50Hz (可调整的 / Adjustable)
占地面积 / Plant Covering Area	长 / Length: 48m; 宽 / Width: 35m; 高 / Height: 17m



# LB3000 强制式沥青搅拌站

## LB3000 ASPHALT BATCH MIXING PLANT



型号 / Model	LB3000
产量 / Capacity	240 t/h (额定工况 / Standard Working Condition)
搅拌机 / Mixer Capacity	3000 kg/批
干燥滚筒 / Drum Dryer	Φ2800*9000mm
燃料消耗 / Fuel Consumption	柴油 / Diesel: 5.5-7kg/t; 煤 / Coal: 10kg/t
废气排放 / Air Emissions	≤20mg/Nm³ (布袋除尘 / Baghouse dust collector)
工作噪音 / Working Noise	≤70db(A)
装机功率 / Installation Power	711kW
额定电压 / Voltage	220V/380V-50Hz (可调整的 / Adjustable)
占地面积 / Plant Covering Area	长 / Length: 60m; 宽 / Width: 45m; 高 / Height: 17m





# 滚筒式沥青搅拌站

## ASPHALT DRUM MIXING PLANT

滚筒式沥青搅拌站主要包括冷骨料供给系统、燃烧系统、干燥滚筒、拌合系统、水除尘系统、沥青供给系统、电气控制系统。

滚筒式沥青搅拌站可以连续生产沥青混合料。

燃烧器：燃油，燃气，燃煤可选。

移动型：MDHB 系列；固定型：DHB 系列。

Asphalt drum mixing plant mainly including: cold aggregate supply system, burner, drying and mixing drum, water dust catcher, bitumen supply system, electrical control system.

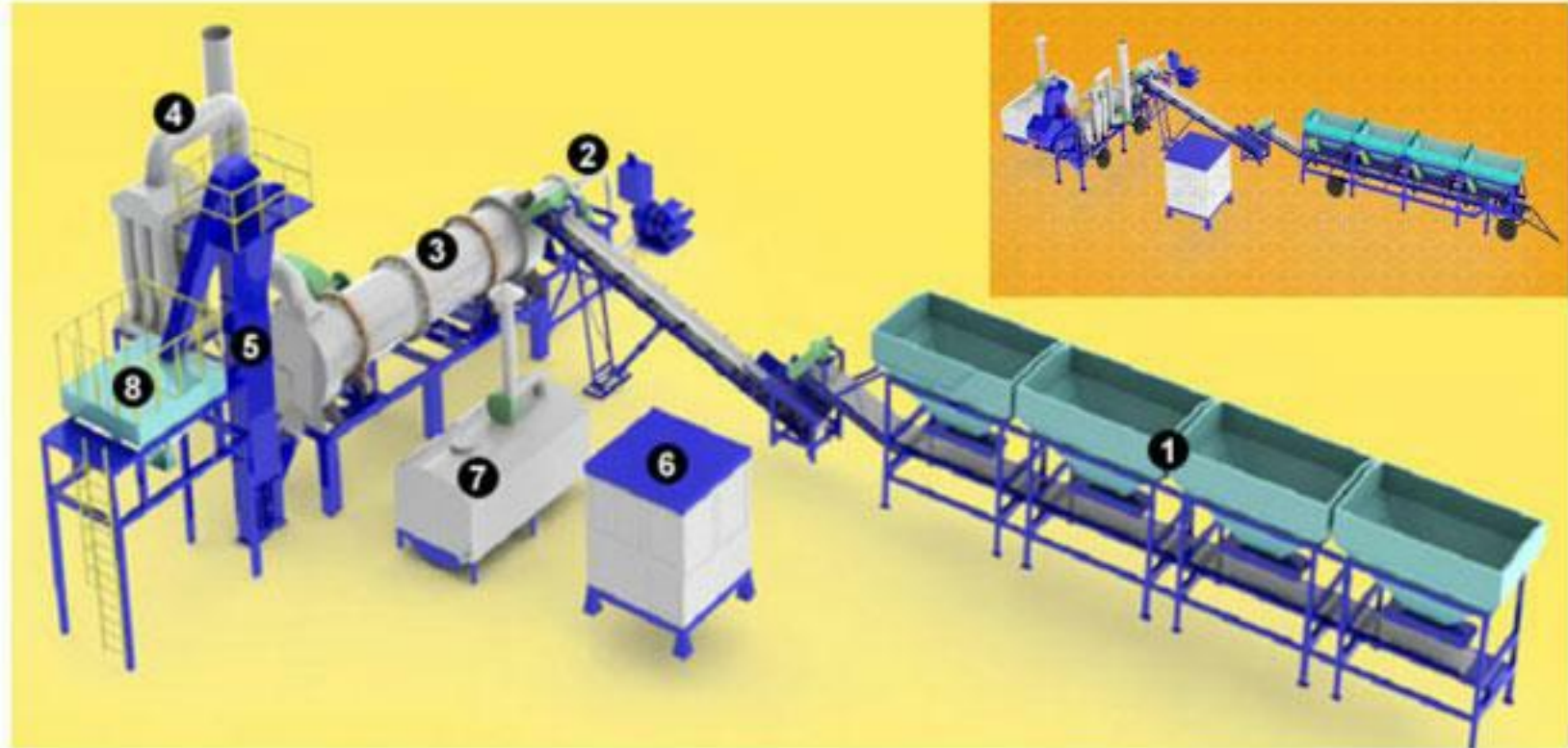
Drum mixing type asphalt plant, to continuously produce asphalt mixture.

### Burning System:

I. Oil burner; II. Gas burner; III. Coal burner; IV. Oil & Gas dual purpose burner.

Mobile Type: MDHB series; Stationary Type: DHB series

### 产品结构 Structure



- 1 冷骨料供给系统  
Cold aggregate supply system
- 2 燃烧系统  
Burning system
- 3 干燥系统和搅拌系统  
Drying and mixing drum
- 4 除尘系统  
Dust catcher system

- 5 提升机  
Hot asphalt elevator
- 6 控制系统  
Control room
- 7 沥青储存罐  
Bitumen storage bin
- 8 成品仓  
Asphalt storage bin



重要部件 Main Components



控制系统 Control System

过热保护开关安全可靠，控制房，外形美观，吊装运输方便；电气控制采用台式操作台，可实现联锁和单机运行；操作台上配置有手动控制操作装置，操作方便直观。

The heat overload protect breaker is safe and reliable, the whole set control system is integrated on the operation platform, which is convenient and shortcut. The equipment has two operation modes: inter-lock operation and single-machine operation, which is convenient for equipment commissioning and production.



冷骨料供应系统 Cold Aggregate Supply System

本系统根据工程需要可将骨料分成四种不同大小，将大颗粒分成中型颗粒，最后将合格料通过传送带送进干燥滚筒。

It can make aggregate material of four different sizes mixed well according to the construction requirement, for the oversized grain, it will be separated by the middle screen, and the qualified material will be conveyed into drying drum by tilted belt conveyor.



拌和主机 Mixing Mainframe

搅拌主机集烘干、加热和拌和于一体。骨料在烘干区形成不完全料帘，并进行预热，向前推进；在加热区完全形成料帘，并快速加热；沥青在拌和区内喷入并与骨料充分均匀混合。

Integrated drying, heating and mixing in the whole part: the aggregate material will form an inadequate material flow in the drying section and go ahead promptly for preheating, and then it will form a sufficient material flow and heat quickly in the heating section. In the mixing section, the asphalt will be sprayed into the aggregate material, which makes the aggregate material and asphalt mixing equably.



煤燃烧系统 Coal Burning System

经过高效碎煤机的煤炭被加工成小于5mm的煤粉，进一步加速合适煤粉的供应速度。燃烧器采用了供油和吹风装置，为搅拌站提供足够的热量。

The high efficient coal crusher integrated with speed adjustable coal powder supply, it provides the coal powder with size of less than 50 micron for the burner. The burner adopts oil supply device and wind supply device, and can provide sufficient heat energy for the mixing plant.

主要参数 Main Parameter

型号 Model	产量 Capacity (t/h)	称量精度 Weighing Accuracy		总功率 Total Power(kW)	燃料消耗 Fuel Consumption(kg/t)	
		骨料 Aggregate	沥青 Bitumen		燃煤 Coal	燃油 Oil
MDHB / DHB-20	20	±1.5%	±1%	40	10	5.5-7
MDHB / DHB-40	40	±1.5%	±1%	75	10-13	5.5-7
MDHB / DHB-60	60	±1.5%	±1%	128	10-13	5.5-7
MDHB / DHB-80	80	±1.5%	±1%	165	10-13	5.5-7
MDHB / DHB-100	100	±1.5%	±1%	200	10-13	5.5-7





# 移动式沥青搅拌站 QLB系列

## MOBILE ASPHALT MIXING PLANT QLB SERIES

- 干燥滚筒和双卧轴搅拌一体设计，搅拌均匀，生产沥青混凝土质量好；  
Integrated design of drying drum and horizontal twin-shaft mixer, more even mixing and better asphalt;
- 测量精确，质量稳定；  
Accurate weighing, and stable quality;
- 结构简单，操作方便，滚筒反转干燥，正转出料；  
Simple structure, easy operation, drying while drum rotate in counter clockwise direction (from burner), discharging while drum rotates in clockwise direction (from burner), and the wind are swirled in the center of the drum;
- 可编程控制系统，触屏，自动控制与人工控制可自由切换；  
PLC control, touch screen, auto/manual switchable;
- 拖车底盘设计便于运输和安装；  
Towing chassis of easy transport and installation;
- 燃烧器有燃油和燃煤两种，可根据用户需要选择；  
Burner is available for coal and oil, at client's option;
- 稳定可靠，易于保养。  
Stable and reliable, easy for maintenance.

## 主要参数 Main Parameter

型号 Model	QLB-10	QLB-15	QLB-20	QLB-30	QLB-40	QLB-60	QLB-80
产能 Capacity	10 t/h	15 t/h	20 t/h	30 t/h	40 t/h	60 t/h	80 t/h
总功率 Overall Power	燃油 Fuel Oil 41.5kW	54kW	63.5kW	104.5kW	125kW	157.5kW	200kW
	燃煤 Fuel Coal 57.5kW	75kW	86.5kW	127.5kW	169kW	205kW	276kW
骨料配料机 Aggregate Batcher	2.3m³×3	2.3m³×3	2.3m³×3	5m³×3	5m³×3	5m³×3	5m³×3
成品料仓 Finished Asphalt Storage Bin	2 t	5 t	5 t	9 t	9 t	9 t	20 t
沥青混凝土温度 Asphalt Temperature	120-180 °C (可调, adjustable)						
燃料消耗 Fuel Consumption	燃油 Fuel Oil: 5-7.5 kg/t; 燃煤 Fuel Coal: 13-15 kg/t						
可选组件 Optional Components	水除尘、布袋除尘、控制室，沥青加热罐 Water dust collector, Baghouse dust collector, Control room, Bitumen heating tank						



## 产品结构 Structure





# 移动式沥青搅拌站 SLB系列

MOBILE ASPHALT MIXING PLANT SLB SERIES



SLB系列移动式沥青搅拌站是双滚筒搅拌站，包含干燥滚筒和搅拌滚筒。生产能力：8-30吨/小时。

SLB series mobile asphalt mixing plants are twin drum asphalt mixing plant. Drying drum and mixing drum are integrated design. Output: 8-30 TPH.

## 产品特点 Features

- 干燥滚筒和搅拌滚筒一体设计，为顾客降低投资成本；  
Integrated design of drying and mixing in drum, reduce initiate cost for clients;
- 结构简单，操作方便，滚筒反转干燥，正转出料；  
Simple structure, easy operation, drying while drum rotate in counter clockwise direction (from burner), discharging while drum rotates in clockwise direction (from burner), and the wind are swirled in the center of the drum;
- 可编程控制系统，触屏，自动控制与人工控制可自由切换；  
PLC control, touch screen, auto/manual switchable;
- 拖车底盘设计便于运输和安装；  
Towing chassis of easy transport and installation;
- 燃烧器有燃油和燃煤两种，可根据用户需要选择；  
Burner is available for coal and oil, at client's option;
- 稳定可靠，易于保养。  
Stable and reliable, easy for maintenance.

## 主要参数 Main Parameter

型号 Model		SLB-8	SLB-10	SLB-15	SLB-20	SLB-30
产能 Capacity		8 t/h	10 t/h	15 t/h	20 t/h	30 t/h
总功率 Overall Power	燃油 Fuel Oil	23.7kW	24.3kW	33kW	46.5kW	60kW
	燃煤 Fuel Coal	40kW	41kW	54kW	70kW	90.3kW
骨料配料机 Aggregate Batcher		2.3m'×3	2.3m'×3	2.3m'×3	2.3m'×3	5m'×3
成品料仓 Finished Asphalt Storage Bin		5 t	5 t	5 t	5 t	9 t
沥青混凝土温度 Asphalt Temperature		120-180°C (可调, adjustable)				
燃料消耗 Fuel Consumption		燃油 Fuel Oil: 5-7.5 kg/t; 燃煤 Fuel Coal: 13-15 kg/t				
可选组件 Optional Components		水除尘、布袋除尘、控制室、沥青加热罐 Water dust collector, Baghouse dust collector, Control room, Bitumen heating tank				

## 产品图片 Pictures







中铁十五局集团

中铁十五局集团

高标准起步  
高强度推进  
高质量达标

水泥④

水泥③



# 皮带传输式混凝土搅拌站

## BELT CONVEYOR CONCRETE MIXING PLANT

HZS 系列皮带传输式混凝土搅拌站是在结合了国内外的搅拌楼和搅拌站的优势和先进技术的基础上研发生产的。采用模块结构设计，保证安装和搬迁的的便利，操作安全可靠，搅拌质量好，效率高。

HZS 系列皮带传输式混凝土搅拌站采用 PLC 自动程序控制和主机全程跟踪管理，操作安全可靠，利于维修保养。

HZS 系列皮带传输式混凝土搅拌站是大中型建筑工程、水利设施、高速公路、海港、桥梁机场等建设以及大型预制混凝土和商用混凝土生产的理想设备。

HZS series belt conveyor concrete mixing plant, on the basis of the combination advantages from various foreign mixing building and station and advanced technology, has been developed and produced. It adopts modular structure design, which maintains convenient installation and removal, safe, comfortable and reliable operation, with good mixing effect and high efficiency. Besides, the HZS series belt conveyor concrete mixing plant adopts PLC automatic logical program control and host computer all-time tracking management, with safe and reliable operation and more facilitate maintenance. The HZS series belt conveyor concrete mixing plant is the optimal equipment of large and medium construction sites, water power, highway, harbor, bridge, airport, large precast products plant and commercial concrete plants and so on.

### 主要参数 Main Parameter

整站 Entire Plant	型号 Model	HZS60	HZS90	HZS120	HZS150
	产能 Capacity (m³/h)	60	90	120	150
	标准出料高度 Standard Discharging Height(mm)	3800	3800	4000	4000
	生产周期 Operation Cycle Time(s)	60	60	60	60
	最大骨料尺寸 Max Aggregate Size(mm)	60/80	60/80	60/80	60/80
	装机总功率 Total Installed Power(kW)	105	145	210	260
	总重 Total Weight (T)	50	60	80	100
	规格 Size (L×W×H)	28.5m×10.6m×18.8m	58.6m×12.4m×18.8m	60.2m×13.7m×18.8m	43.6m×24.0m×18.8m
搅拌系统 Mixing System	搅拌机型号 Mixer	JS1000	JS1500	JS2000	JS3000
	搅拌机功率 Mixing Motor(kW)	2x18.5	2x30	2x37	2x55
配料系统 Batching System	配料机型号 Batching Machine	PLD1600	PLD2400	PLD3200	PLD4800
	储料斗容量 Capacity of Storage Hopper(m³)	4x5	4x10	4x18	4x25
称量系统 Weight System	骨料计量精度 Aggregate Weighing Precision(%)	±2	±2	±2	±2
	水泥计量精度 Cement Weighing Precision(%)	±1	±1	±1	±1
	给水计量精度 Water Weighing Precision(%)	±1	±1	±1	±1
	添加剂计量精度 Additive weighing Precision(%)	±1	±1	±1	±1

### 产品特点 Features

- 行星齿轮驱动系统，平衡环与传动轴转速保持一致。  
Driving system adopts planetary gear, the gimbals transmission shaft insures circumgyrate at the same speed.
- 选择螺旋搅拌系统，搅拌效率高；胶合板和搅拌叶片采用高硬度和高韧性的耐磨合金钢，延长使用寿命。  
Mixing system choose the spiral mixing system, which has high efficiency, scale board and mixing blades adopts high-rigidity and high tenacity wearable case alloy steel, to prolong the working life.
- 骨料提升装置采用变频控制，操作平稳可靠。  
Aggregate lifting appliance adopts frequency control, thus providing smooth and reliable operation.
- 润滑系统采用先进的集中润滑系统，方便供油；此外还配备了过高过低电压报警和低油位报警系统，安全可靠。  
Lubrication system adopts advanced centralized oil lubricating system, convenient for oil supplying, this system is equipped with overvoltage warning and low oil level warning, safe and reliable.
- PC 和PLC 控制系统确保高度的可靠性。  
PC+PLC control system ensures the high reliability.
- 准确精确的计量，确保满足各种高性能混凝土生产的要求。  
With its virtue of precise computation, it can meet the requirement of every high performance concrete.
- 人性化智能控制极大地方便了操作。  
Human-based intelligent control facilitates the operation greatly.
- 结构部件经久耐用，且多数电器元件均采用世界知名品牌。  
Structural members are durable, and most electric elements adopt world famous brands.





# 斗提式混凝土搅拌站

## HOPPER LIFT CONCRETE MIXING PLANT



HZS 系列斗提式混凝土搅拌站，属强制、高效型设备，可生产塑性、干硬性混凝土等多种混凝土，生产效率高，广泛用于中等规模建筑施工、道路桥梁工程以及生产混凝土制品的预制厂中，是生产商品混凝土的理想设备。该搅拌系统主机采用 JS 系列双卧轴强制式搅拌机，具有搅拌混凝土匀质性好，搅拌时间短，易损件寿命长，操作维修方便，它采用了最新设计思路的电子称量、微机控制、数字显示等控制技术，电子称量均具缓冲装置及自动补偿功能，计量精度高。设有检修走道，是广大施工单位生产高质量混凝土的理想选择。

HZS series hopper lift concrete batching plant, belongs to compulsory and high efficiency equipment, it can produce various kinds of concrete including quaking concrete and hard concrete, with high productive efficiency, it is widely used in medium scale building works, road and bridge works and concrete products prefabricating plants, and is an ideal equipment to produce commercial used concrete. The main machine of this series use JS series double shaft compulsory mixer, it can mix concrete evenly, with a short period of mixing, long life wearing parts, it can be operated and maintained conveniently, it used control technology with newest design concept, for example: electric weighing, computer control, and digital display, etc., electric weighing has been equipped with buffer device and auto compensation function and the measure precision is high. Equipped with maintenance sidewalk, it is the ideal selection for the construction units to produce high quality concrete.

## 主要参数 Main Parameter

型号 Model	HZS25	HZS35	HZS50	HZS75
产能 Capacity (m³/h)	25	35	50	75
搅拌周期 Mixing Time (s)	60	60	60	60
最大骨料尺寸 Max Aggregate Size (mm)	60/80	60/80	60/80	60/80
出料高度 Discharging Height (mm)	3800	3800	3800	3800
总功率 Total Power (kW)	60	70	80	90
总重量 Total Weight (Ton)	25	30	50	54
整体尺寸 Total Dimensions (m)	15×8×12	15.2×8.5×15.4	18.2×10×19.4	18×10×19.4





# 发货现场 SHIPMENTS





## 发货现场 SHIPMENTS



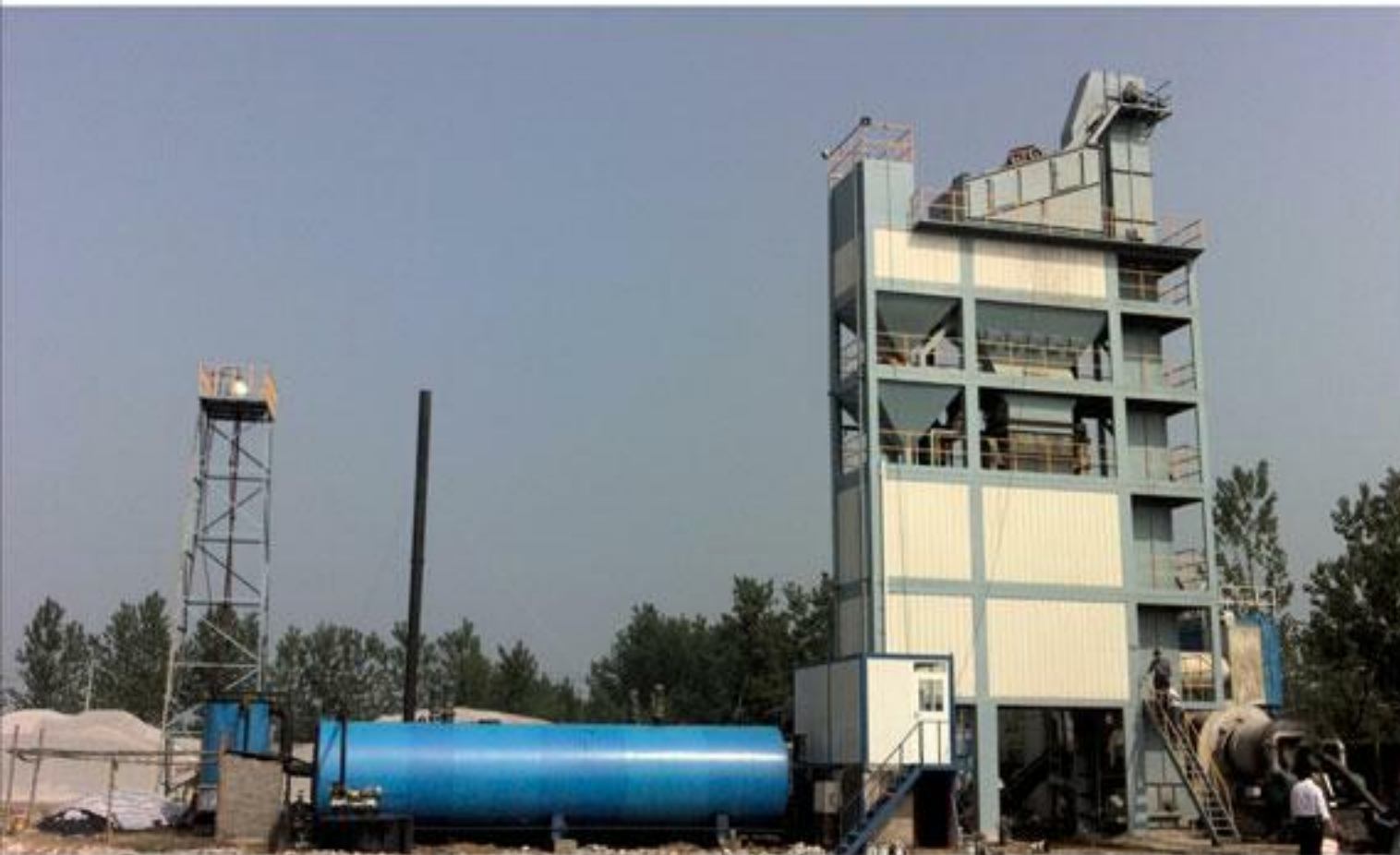


# 成功案例 CASES





# 成功案例 CASES



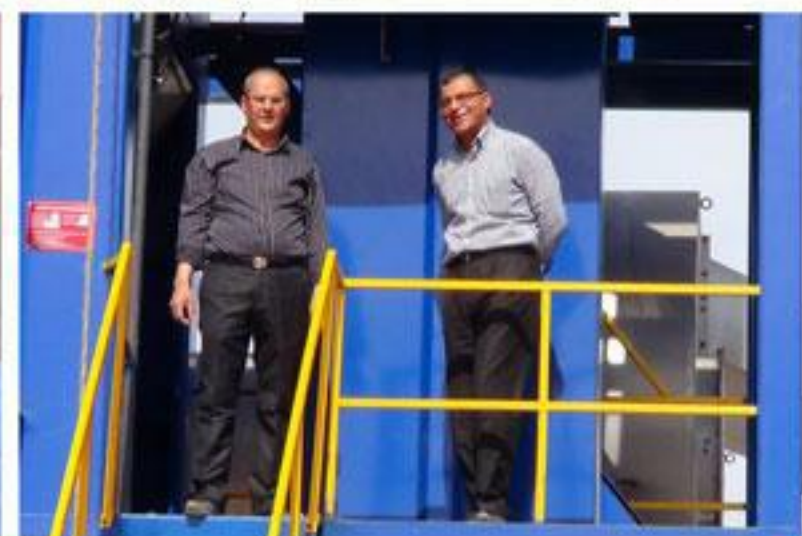
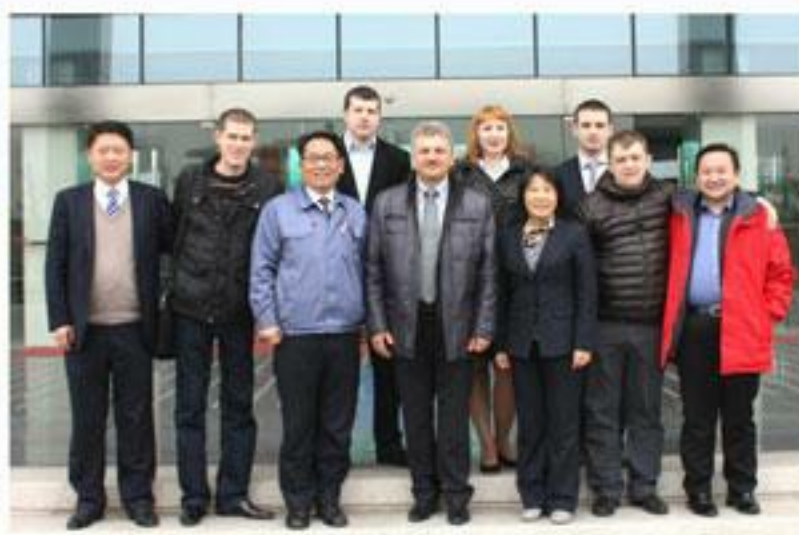


# 成功案例 CASES





# 国际交流 INTERNATIONAL COMMUNICATION





## 营销网络 MARKETING NETWORK

国内市场：辽原集团生产的沥青混合料搅拌设备，已在河南、湖北、安徽、湖南、四川、陕西、山西、河北等近30个省、市、自治区的高速公路、高等级公路和城市道路建设中发挥了巨大的作用，为中国道路建设做出了重要的贡献。

国际市场：辽原集团于2006年开始开发海外市场，实行背靠祖国，面向国际的发展策略，并于2010年专门成立了子公司——郑州大予机械设备有限公司，致力开发国际市场，并迅速打开了国际市场，取得了骄人的成绩。目前，辽原集团已经在俄罗斯、澳大利亚、阿联酋、沙特阿拉伯、秘鲁、智利、阿尔及利亚、肯尼亚、南非、津巴布韦、菲律宾、印度尼西亚、哈萨克斯坦、蒙古、埃及等国销售并安装了超过30套的沥青混合料搅拌设备，国际市场前景非常美好。

Domestic Market: Henan, Hubei, Anhui, Hunan, Sichuan, Shaanxi, Shanxi, Hebei, Beijing, Tianjin, Jiangsu, Shandong, Zhejiang, Shanghai, Jiangxi, Guangdong, Guangxi, Xinjiang, Yunnan, Guizhou, Xinjiang, Ningxia, Gansu, Inner Mongolia, Liaoning, Jilin, Heilongjiang, Fujian etc.

International Marketing: Poland, Rumania, Russia, Australia, New Zealand, Canada, Panama, Ecuador, Peru, Chile, Algeria, Kenya, South Africa, Zimbabwe, Philippines, Indonesia, Kazakhstan, Mongolia, Egypt, etc.





# 【用心服务】

用心服务—用我们的诚心，热心，专心为客户提供心贴心的服务。

Provide heart to heart services to customers with our sincerity, enthusiasm and concentration.



## 服务体系 SERVICE

### 售前服务——一团火

Before sale service: Enthusiasm

为您提供项目前期策划，工艺流程设计方案，根据您的特殊需求设计制造产品。

Provide you the prophase plan, process flow design and manufacture equipment according to your special demand.

### 售中服务——孺子牛

Sale service: Servant

公司派技术人员到现场指导安装，调试，现场培训操作人员，并陪您一起完成对设备的验收。

We sends technicians to the jobsite for guiding the installation and adjustment, training operators and finishing the check and accept together with you.

### 售后服务——心贴心

After sale service: Heart to heart

定期回访客户，建立长期的友好关系。

To establish long term friendship, We will return visit to customers on a regular basis.

服务是产品的一部分，是竞争力的一部分，公司一直坚持“以用户需求为中心实施服务经营，以用户满意为目标推行品牌服务”的用户服务准则，并以“一团火，孺子牛，心贴心”的服务精神贯穿到整个服务体系中，以实现“铸辽原品牌，让用户满意”的永恒追求。

Service is part of product and competitive strength. We always hold that the service standard of "users' demand is orientation to implement the service management, users' satisfaction is goal to carry out the brand service". And the service spirits of "enthusiasm, servant and faithfulness" should run through the whole service system. Work hard to make our persistent pursuit of "establishing LiaoYuan brand, satisfying customers" comes true.



客户服务中心  
Customer Service Center



优秀安装团队  
Excellent Installation Team



客户档案室  
Customer Archives



Customer satisfaction,  
the eternal pursuit of LiaoYuan

客户满意

辽原永恒的追求

No.1